



OKLAHOMA STATEWIDE  
virtual-charter-school-board  
LEADING CHANGE. DELIVERING CHOICE.

# Oklahoma Statewide Virtual Charter School Board – Statewide Overview

## Oklahoma Statewide Virtual Charter School Board

Chairman:  
Matthew L. Hamrick

Vice-Chairman:  
Debbie Long

Clerk of the Board:  
John Harrington

Members:  
Pamela Vreeland  
Dr. Ethan Lindsey

Ex-officio Members:  
Natalie Shirley  
Secretary of Education  
and Workforce  
Development

Joy Hofmeister  
State Superintendent of  
Public Instruction

Executive Director  
Rebecca L. Wilkinson,  
Ed. D.

September  
2017

In an effort to provide transparency in its oversight practices, the Statewide Virtual Charter School Board (SVCSB) provides an annual report for each virtual charter school it authorizes. The SVCSB has partnered with the Office of Educational Quality and Accountability (OEQA) to collect, analyze, report, and present a summary of key data for each school, as required as part of the Performance Framework, in the areas of academic performance, organizational capacity, and financial responsibility. This State Overview is prepared to allow for comparisons of the data contained in the individual school's annual reports with state results.

### Statewide Virtual Charter Schools

- Epic One-on-One Charter School (EPIC)
- Insight School of Oklahoma (ISOK)
- Oklahoma Connections Academy (OKCA)
- Oklahoma Virtual Charter Academy (OVCA)

Enrollment is the starting point for all analysis. It puts in perspective the width and breadth with which all other information is presented and analyzed.

### 2016 Fall Enrollment by Race

	Total	White	Black	American Indian	Asian	Two or More Races	Hispanic
STATE TOTAL	693,710	342,418	60,843	96,703	16,245	60,893	116,608
		49.4%	8.8%	13.9%	2.3%	8.8%	16.8%
VIRTUAL CHARTERS (4)	13,166	8,508	1,048	1,741	147	504	1,218
		64.6%	8.0%	13.2%	1.1%	3.8%	9.3%
EPIC	9,077	5,932	784	1,351	102	28	880
		65.4%	8.6%	14.9%	1.1%	0.3%	9.7%
OVCA	2,429	1,514	180	251	31	274	179
		62.3%	7.4%	10.3%	1.3%	11.3%	7.4%
OKCA	1,246	802	68	108	11	141	116
		64.4%	5.5%	8.7%	0.9%	11.3%	9.3%
ISOK	414	260	16	31	3	61	43
		62.8%	3.9%	7.5%	0.7%	14.7%	10.4%

- Hispanic students represent the largest minority for the State, while American Indian students represent the largest minority for the virtual charters.
- Less than 50% of the State's fall enrollment is White.
- Almost two-thirds of the virtual charters enrollment is White.
- EPIC has the largest percentage of Black students.
- EPIC has the largest percentage of American Indian students.
- ISOK has the largest percentage of Hispanic students.

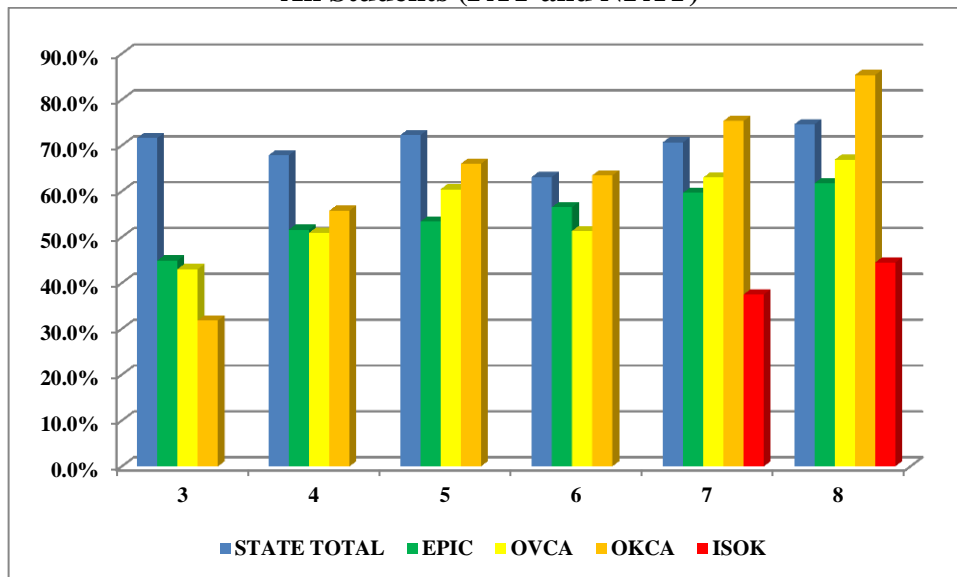
The achievement section includes information from assessments given to all students, those students in Special Education (with an IEP), and students that are Economically Disadvantaged. For these reports, results for full academic year (FAY) and non-full academic year (NFAY) students are shown.

**Percent Students Scoring Proficient and Above: 2016  
Reading and Math  
All Students (FAY and NFAY)**

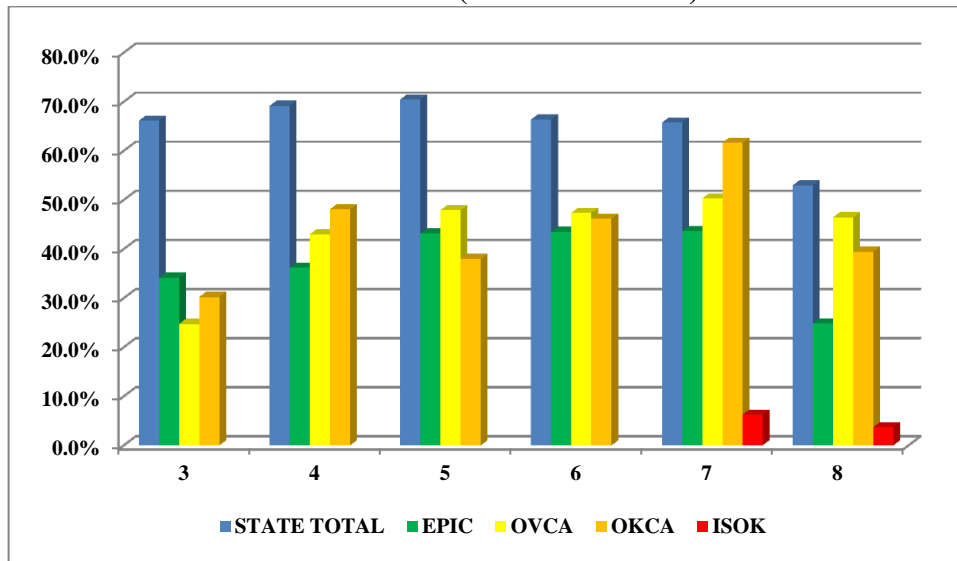
Reading	3	4	5	6	7	8
STATE TOTAL	71.6%	67.8%	72.2%	63.1%	70.7%	74.6%
EPIC	44.9%	51.6%	53.4%	56.5%	59.7%	61.7%
OVCA	43.0%	50.9%	60.4%	51.3%	63.0%	66.9%
OKCA	31.8%	55.8%	66.0%	63.5%	75.3%	85.3%
ISOK					37.5%	44.4%
Math	3	4	5	6	7	8
STATE TOTAL	66.1%	69.2%	70.5%	66.4%	65.7%	53.0%
EPIC	34.2%	36.2%	43.2%	43.5%	43.7%	24.8%
OVCA	24.7%	43.0%	47.9%	47.4%	50.3%	46.5%
OKCA	30.2%	48.1%	38.0%	46.2%	61.6%	39.4%
ISOK					6.3%	3.7%

- OKCA out paces the state average for students scoring proficient and above in 6<sup>th</sup>, 7<sup>th</sup>, and 8<sup>th</sup> grade Reading.
- None of the virtual charters have a higher percentage of students scoring proficient and above in Math.

**Percent Students Scoring Proficient and Above: 2016  
Reading  
All Students (FAY and NFAY)**

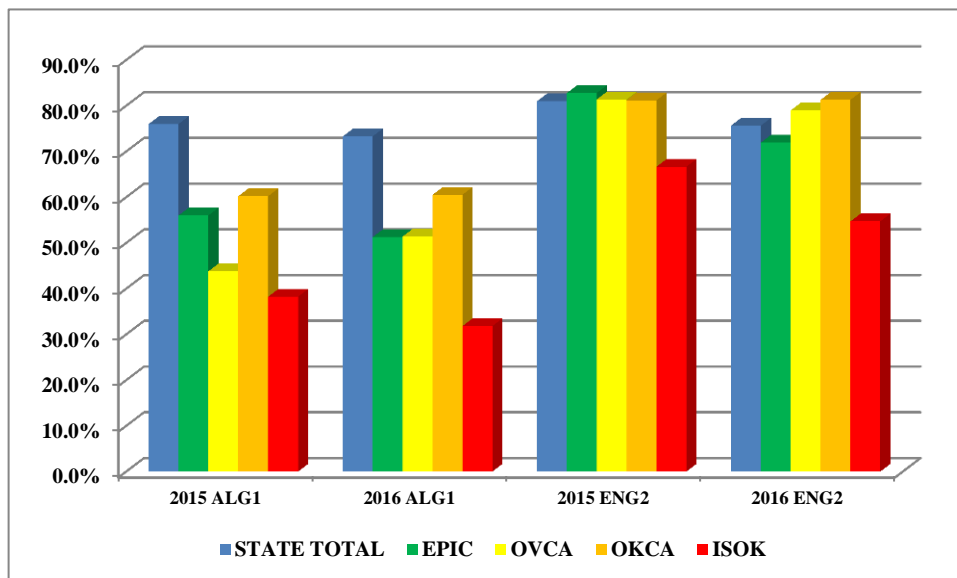


**Percent Students Scoring Proficient and Above: 2015 and 2016  
Math  
All Students (FAY and NFAY)**



**Percent Students Scoring Proficient and Above: 2015 and 2016  
Algebra I and English II EOI  
All Students (FAY and NFAY)**

EOIs	2015		2016	
	Algebra I	English II	Algebra I	English II
STATE TOTAL	76.0%	81.0%	73.3%	75.7%
EPIC	56.0%	82.8%	51.3%	72.0%
OVCA	43.8%	81.4%	51.4%	79.0%
OKCA	60.2%	81.2%	60.5%	81.3%
ISOK	38.2%	66.7%	31.8%	54.7%



- Three schools; EPIC, OVCA, and OKCA have a higher percentage of students scoring proficient and above in 2015 for the English II EOI than the state average.
- Two schools; OVCA and OKCA have a higher percentage of students scoring proficient and above in 2016 for the English II EOI than the state average.
- None of the virtual charters have a higher percentage of students scoring proficient and above for Algebra I EOI for 2015 or 2016.

**Percent Students Scoring Proficient and Above: 2016  
Reading and Math  
Special Education (IEP) Students (FAY and NFAY)**

Reading	3	4	5	6	7	8
STATE TOTAL	38.9%	33.5%	34.1%	23.4%	28.2%	31.5%
EPIC	14.3%	27.6%	20.7%	18.9%	41.3%	27.8%
OVCA	22.2%	11.1%	41.2%	23.3%	36.1%	42.9%
OKCA	14.3%	16.7%	37.5%	40.0%	46.2%	50.0%
ISOK					**	**
Math	3	4	5	6	7	8
STATE TOTAL	43.7%	44.0%	37.4%	29.0%	26.6%	23.8%
EPIC	16.7%	24.1%	23.3%	18.9%	19.6%	5.7%
OVCA	11.1%	11.1%	23.5%	16.7%	30.6%	29.6%
OKCA	33.3%	33.3%	12.5%	40.0%	38.5%	12.5%
ISOK					**	**

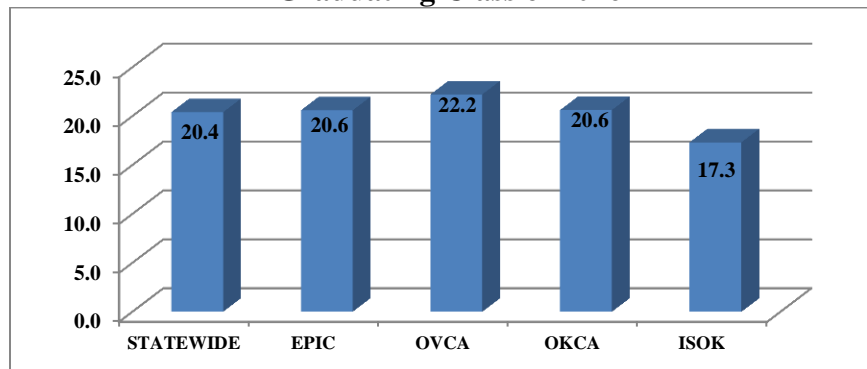
\*\* = Data Protected by Privacy Laws

**Percent Students Scoring Proficient and Above: 2016  
Reading and Math  
Economically Disadvantaged Students (FAY and NFAY)**

Reading	3	4	5	6	7	8
STATE TOTAL	64.0%	59.4%	64.7%	53.1%	61.7%	66.1%
EPIC	41.0%	44.9%	47.6%	50.8%	51.4%	55.2%
OVCA	36.2%	44.4%	56.1%	47.5%	53.9%	66.3%
OKCA	23.3%	37.0%	55.6%	52.0%	72.1%	83.3%
ISOK					30.0%	37.5%
Math	3	4	5	6	7	8
STATE TOTAL	58.0%	61.1%	62.6%	57.4%	57.0%	46.4%
EPIC	30.2%	29.1%	36.8%	38.0%	35.4%	19.7%
OVCA	15.9%	36.3%	40.4%	43.6%	43.5%	47.2%
OKCA	20.7%	37.0%	18.5%	52.0%	53.5%	38.9%
ISOK					10.0%	**

\*\* = Data Protected by Privacy Laws

**Average ACT Scores  
Graduating Class of 2016**



Prepared by



**Office of Educational Quality and Accountability**

840 Research Parkway, Suite 455

Oklahoma City, OK 73104

Phone: (405) 522-5399 Fax: (405) 525-0373

Web Site: [www.oeqa.ok.gov](http://www.oeqa.ok.gov)

E-mail: [info@oeqa.ok.gov](mailto:info@oeqa.ok.gov)